



# HOPE AT HOME



## Central America is experiencing its worst crisis in a generation.

Violence levels are among the highest in the world, poverty is extreme, and jobs are few. Youth are the hardest hit. From 2011 to 2016, more than 10% of the youth in El Salvador, Guatemala, and Honduras migrated to the United States. World Vision believes these youth deserve better, and we have a solution that works. By challenging violence at all levels and providing economic opportunities, we will reinstate hope and transform communities.

**Your support will provide safe spaces for vulnerable kids, plus jobs, training, and education for at-risk youth.** As a faith-based organization with a staff that is 95% local, we are uniquely positioned to bring together and empower thousands of churches, businesses, schools, and government offices to empower youth with hope at home. Together with Cure Violence Global, we will work in the most dangerous areas to stop gang violence before it happens, using proven methods to de-escalate conflict.

Of the **52,000 children and youth** we assisted in El Salvador in 2018, **only two** joined migrant caravans.

World Vision is currently working with **150,000 children** in **1,700 communities** and **2,300 churches** in these areas, and providing positive parenting support for **46,000 parents**.



Field research from El Salvador revealed that for every **\$1** World Vision invested in training and equipping faith communities (notably, local churches), these communities invested an additional **\$6**.<sup>1</sup>

In Honduras, the Cure Violence approach has **reduced killings by 88%** in targeted areas.

## EL SALVADOR

Population below poverty line: **33%**

- People who know a victim of child violence **38%**
- Children abused at home **21%**
- Murder rate compared to U.S. **17x**

## GUATEMALA

Population below poverty line: **59%**

- People who know a victim of child violence **38%**
- Children abused at home **23%**
- Murder rate compared to U.S. **9x**

## HONDURAS

Population below poverty line: **30%**

- People who know a victim of child violence **48%**
- Children abused at home **24%**
- Murder rate compared to U.S. **22x**

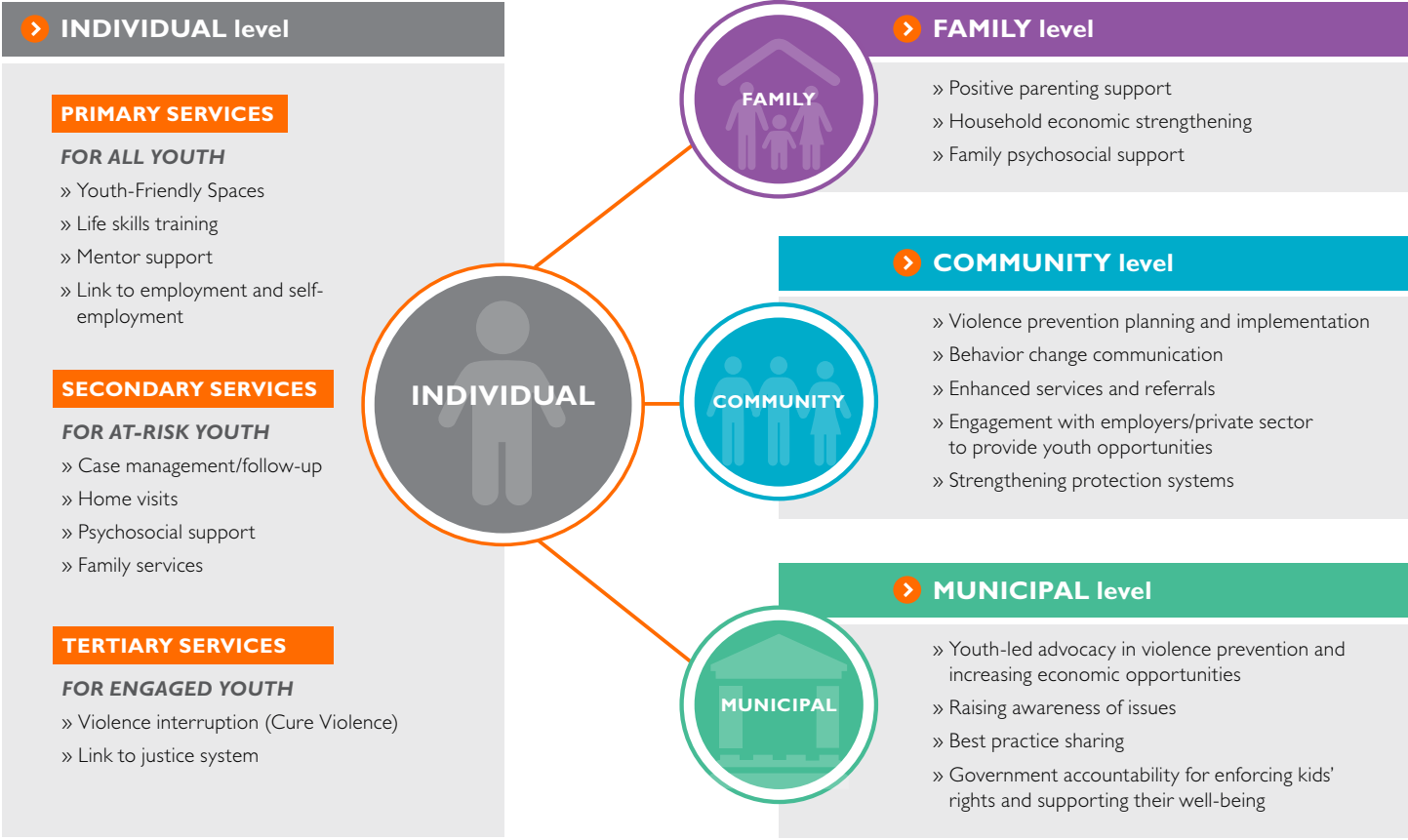
<sup>1</sup>Jean Paul Ortiz, Edwin Alberto Mira, Maria Rebeca Menendez, Erick Guillermo Basurto, *Walking with the Church* (San Salvador, El Salvador: World Vision, 2017).

TARGET OUTCOMES	
70%	of youth participants employed, self-employed, or returning to education
50%	reduction in community violence
30%	reduction in familial violence

TARGET BENEFICIARIES		
The scalable nature of our programming means that your support can provide increased economic opportunities for youth in Honduras, Guatemala, or El Salvador.		
\$1 million	\$5 million	\$10 million
UP TO 2,000 YOUTH	UP TO 25,000 YOUTH	UP TO 50,000 YOUTH

# A PROVEN SOCIOECOLOGICAL APPROACH

Interventions through local churches, communities, and governments



For more information contact Kimberly Quanstrum-Jillson, Senior Director of Foundations and Partnerships, at [kjillson@worldvision.org](mailto:kjillson@worldvision.org).



World Vision is a Christian humanitarian organization dedicated to working with children, families, and their communities worldwide to reach their full potential by tackling the causes of poverty and injustice.

FDMI4956\_0120 © 2020 World Vision, Inc.